

# Specification for Accreditation Photographs

## Photos must be:

1 inch wide x 1 3/4 inch high

Free of shadows , glare or flash reflection

Centered and straight on (face and shoulder centered and squared to camera)

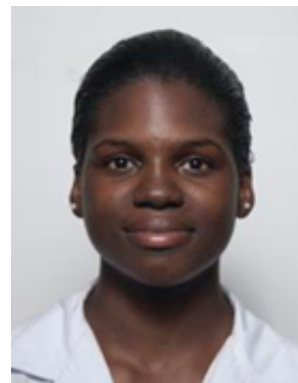
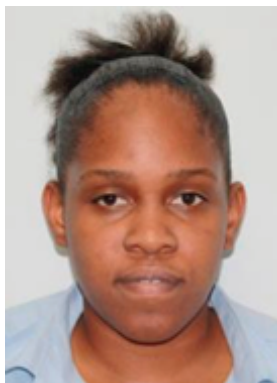
Taken with a neutral facial expression (eyes opened and mouth closed)

Clear, sharp and in focus

Neutral solid background with clear difference from face and background

Representative of natural skin tones

## Acceptable photographs



## Unacceptable photographs



Photo must be taken front on with both ears visible



Photo must be taken from the shoulder upwards



Photo should be front on against a solid background

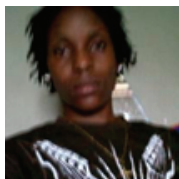


Photo must be in focus and not blurred



Eyes must be clearly visible. Photo must be without glare



Photo is skewed and taken too far away



Photo of a photo is not acceptable



Photo is taken too far away. Hats not acceptable



The head should not be covered and straight on



Photograph should be taken against a solid neutral background



Dimension incorrect. Entire head must be shown



Photograph should have no watermarks or writing