

Specification for Accreditation Photographs

Photos must be:

1 inch wide x 1 3/4 inch high

Free of shadows , glare or flash reflection

Centered and straight on (face and shoulder centered and squared to camera)

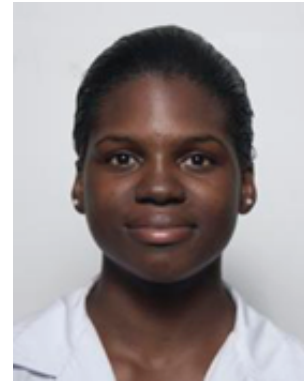
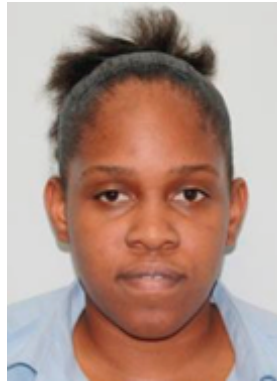
Taken with a neutral facial expression (eyes opened and mouth closed)

Clear, sharp and in focus

Neutral solid background with clear difference from face and background

Representative of natural skin tones

Acceptable photographs



Unacceptable photographs



Photo must be taken front on with both ears visible



Photo must be taken from the shoulder upwards



Photo should be front on against a solid background

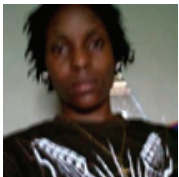


Photo must be in focus and not blurred



Eyes must be clearly visible. Photo must be without glare



Photo is skewed and taken too far away



Photo of a photo is not acceptable



Photo is taken too far away. Hats not acceptable



The head should not be covered and straight on



Photograph should be taken against a solid neutral background



Dimension incorrect. Entire head must be shown



Photograph should have no watermarks or writing